

12th Annual



Bayview Yacht Club's Women on Water Regatta



For the

Natalie J. O'Neil Trophy

Point to Point – Evening of July 31, 2015

Abbreviations:

PC – Protest Committee
OA – Organizing Authority
SI – Sailing Instructions
Bayview – Bayview Yacht Club

RC – Race Committee
RRS – Racing Rules of Sailing
NOR – Notice of Race

1. RULES

- 1.1 The Regatta will be governed by the rules as defined by Racing Rules of Sailing (RRS) including the U.S. SAILING prescriptions.
- 1.2 The Notice of Race (except as changed by these Sailing Instructions), and these Sailing Instructions. The Sailing Instructions shall take precedence over the Notice of Race for any conflicts that may exist between the two documents. This changes RRS 63.7.
- 1.2 Individual Class Rules will apply subject to the following modifications:
 - a. Skippers are not required to be a member of the class.
 - b. VHF radios are permitted.
 - c. Weight limits are waived.

2. NOTICES TO COMPETITORS

Notices to competitors will be posted on the official notice board located in the Mackinac Room or in the adjoining hallway of Bayview Yacht Club.

3. CHANGES IN SAILING INSTRUCTIONS

Any change to the Sailing Instructions will be posted before 1730 EDT on the day it will take effect.

4. SIGNALS MADE ASHORE

- 4.1 Signals made ashore will be made from the club house balcony located on the river side of Bayview Yacht Club. Signals made afloat will be from a Race Committee boat.
- 4.2

Shortened Course



S' flag will be displayed before the Preparatory signal of any class for which it applies (this changes RRS 32)

2 long sounds

(Made Ashore)






Shortened Course



S' flag will be displayed applying to all classes in which the lead boat has not yet advanced to that position on the race course

Repetitive sounds

(Made Afloat)

<u>Recall Signals</u>		X' flag for individual recall	1 sound
		First Substitute' for general recall	2 sounds
<u>Postponement Signal</u>		AP' pennant - races not started are postponed. The warning signal will be made 1 minute after removal	2 sounds
<u>Abandonment Signal</u>		N' flag - all races are abandoned, return to the starting area. The warning signal will be made 1 minute after removal.	3 sounds
		N' over 'A' flags - All races are abandoned; no more racing today	3 sounds

5. SCHEDULE OF RACE

The scheduled time of the warning signal for the first race is 1900.

6. CLASSES, CLASS FLAGS, AND INITIAL STARTING SEQUENCE

<u>Start</u>	<u>Class</u>	<u>Class Flag</u>	<u>Standard Course</u>	<u>Shortened Course</u>
1	PHRF 1 One Design	Numeral pennant 1 (White pennant with red circle insert)	Course #1	Course #2
2	PHRF 2	Numeral pennant 2 (Pennant with white circle insert)	Course #1	Course #2
3	PHRF 3	Numeral pennant 3	Course #2	Course #3

7. Classes are assigned to sail the race courses as follows:

COURSE #1 Distance = 10.1 NM					COURSE #2 Distance = 8.8 NM				
LAT	LONG	TO	Buoy	MARK TO	LAT	LONG	TO	Buoy	MARK TO
N42 21.321	W82 55.90	BYC-A	YELLOW	PORT	N42 21.321	W82 55.90	BYC-A	YELLOW	PORT
N42 23.321	W82 52.00	G7	GREEN	PORT	N42 22.940	W82 52.584	G5	GREEN	PORT
N42 21.321	W82 55.90	BYC-A	YELLOW	STBD	N42 21.321	W82 55.90	BYC-A	YELLOW	STBD
N42 21 225	W82 57.072	FINISH	ORANGE		N42 21 225	W82 57.072	FINISH	ORANGE	
COURSE #3 Distance = 7.2 NM									
LAT	LONG	TO	Buoy	MARK TO					
N42 21.321	W82 55.90	BYC-A	YELLOW	PORT					
N42 22 446	W82 53 305	G3	GREEN	PORT					
N42 21.321	W82 55.90	BYC-A	YELLOW	STBD					
N42 21 225	W82 57.072	FINISH	ORANGE						

8. Boats shall not pass between Peche Island and the Rear Range Light.

9. THE START

- 9.1 Starts will be made in accordance with RRS 26.
- 9.2 The starting line will be between the orange flag or shape displayed on the second floor balcony of the Bayview Yacht Club and an inflatable orange mark floating in the river opposite the flag displayed ashore.

10. THE FINISH

The finish line will be between the orange flag or shape displayed on the second floor balcony of the Bayview Yacht Club and a floating orange inflatable mark floating in the river opposite the flag displayed ashore.

11. TIME LIMITS

- 11.1 The time limit for all classes to complete their course, as required by rule 28, is two (2) hours.
- 11.2 Boats failing to finish within two (2) hours after their class start, as required by rule 28, shall be scored 'Did Not Finish (DNF)'. This changes rules 35, A4 and A5.

12. PROTESTS AND REQUESTS FOR REDRESS

- 12.1 Protest forms are available on line at <http://www.ussailing.org/racemgt/documents/ussapf.pdf>.
- 12.2 Protests and requests for redress or reopening shall be delivered to the Race Committee staff within the appropriate time limit.
- 12.3 For each class, the protest time limit is one (1) hour after the last boat has finished or the time limit has expired (reference RRS 61.3).
- 12.4 The time and place of protest hearings, if any, will be notified by the Race Committee.
- 12.5 At the Race Committee's discretion, arbitration may be available with a twenty (20%) percent scoring penalty.
- 12.6 Boats intending to file a protest against another boat or file for redress for an incident in the racing area shall fly a protest flag until no longer racing and notify the Race Committee on VHF radio channel 72 after finishing or withdrawing. This changes RRS 62.2.

13. COURTESY BROADCASTS

The Race Committee may attempt to provide information on VHF Channel 72 as a courtesy. In all cases, race signals shall govern. Failure to hear or receive such transmission will not be grounds for redress. This changes RRS 62. A boat shall not make any radio transmissions while racing except on VHF Channel 16 or with the Race Committee on VHF Channel 72. While racing, a boat shall not receive communication that is not freely available to all boats. This restriction also applies to mobile telephones.

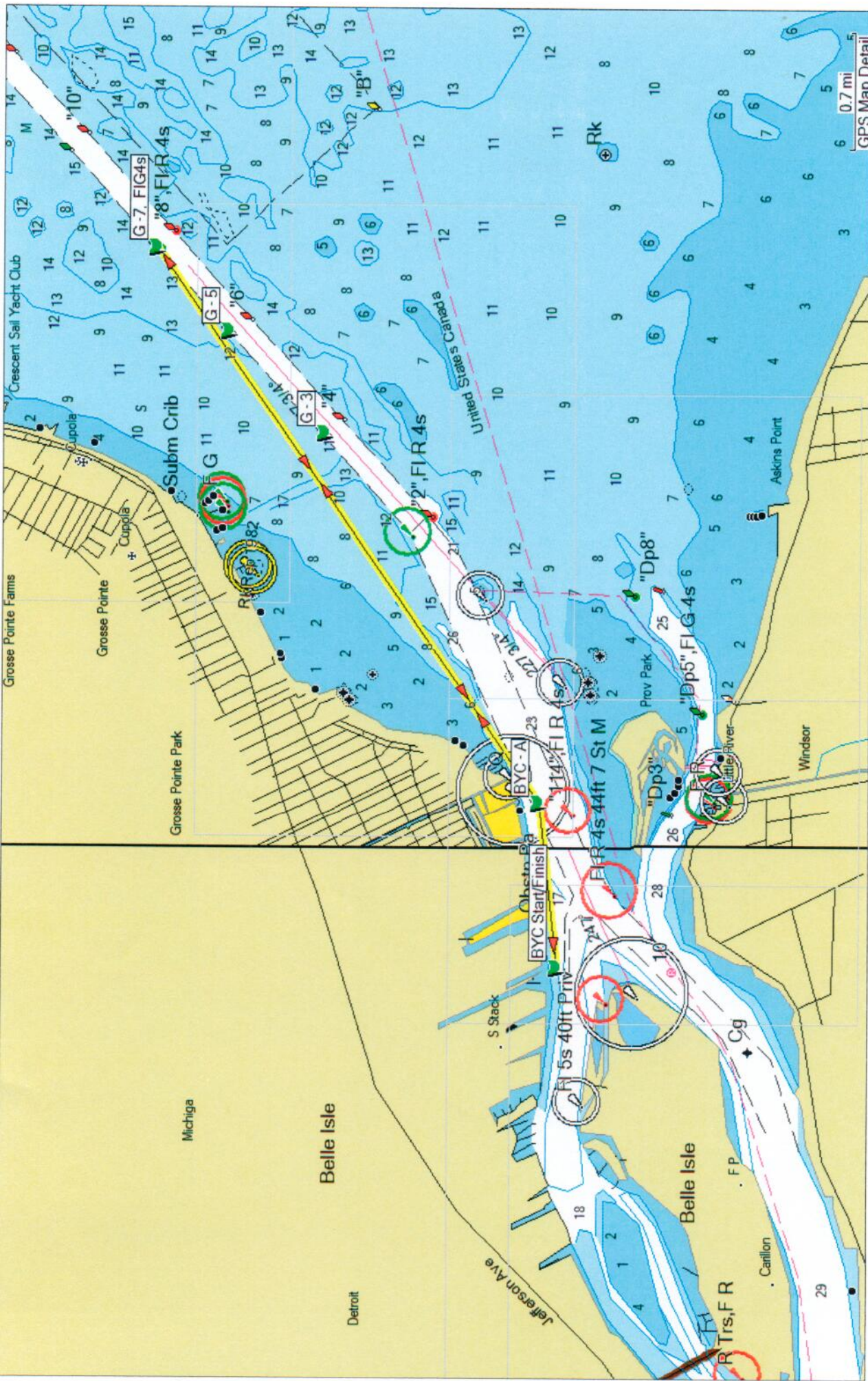
14. PRIZES

Awards will be made for 1st, 2nd and 3rd place finishes in each class with five (5) or more boats. Additional awards may be given at the discretion of the Organizing Authority.

The Natalie J. O'Niel Trophy (which will remain at Bayview Yacht Club) will be awarded to the 1st place overall winner consisting of an **all female crew**.

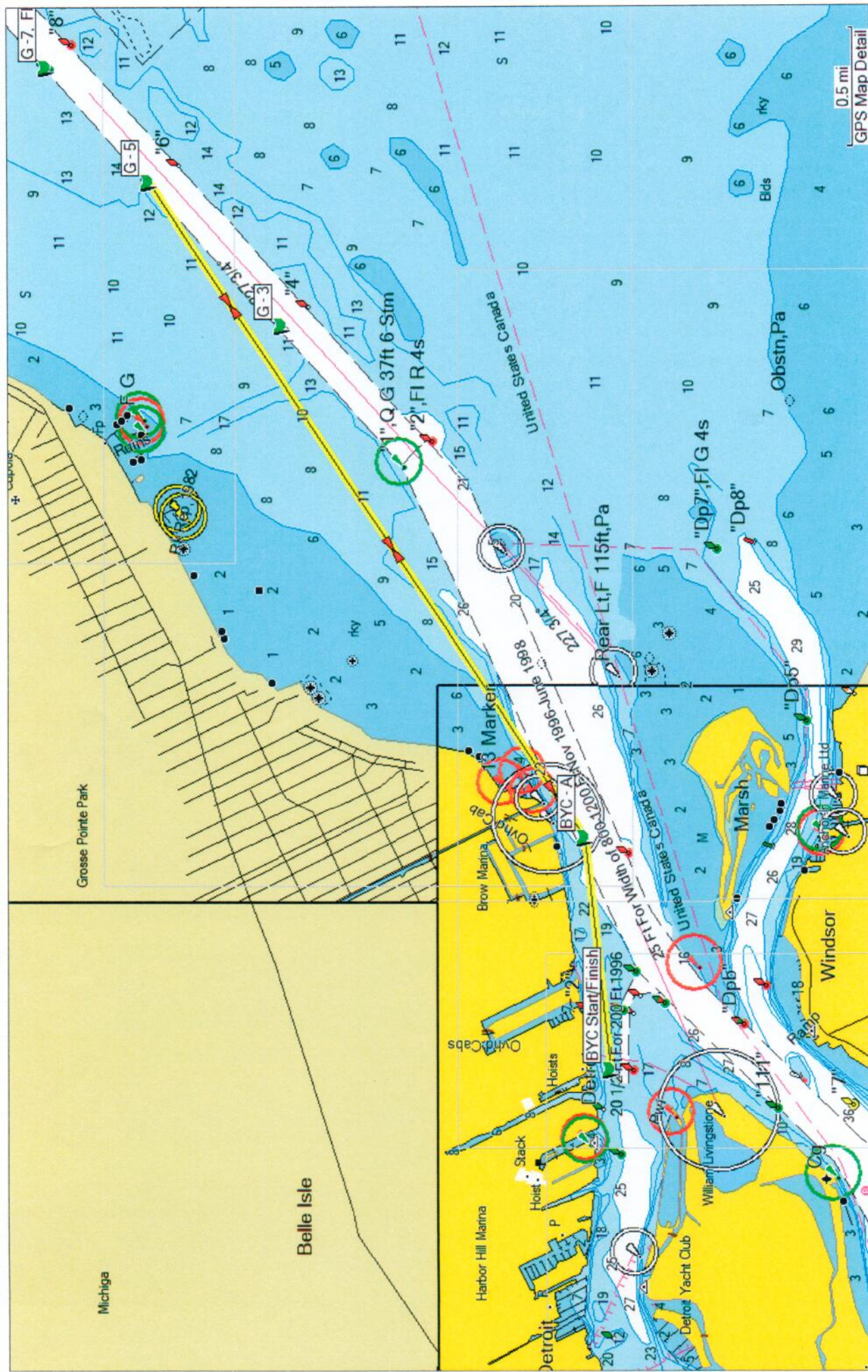
15. COMPETITOR'S CONDUCT

The skipper shall be responsible for the conduct of their crew before, during and after racing.



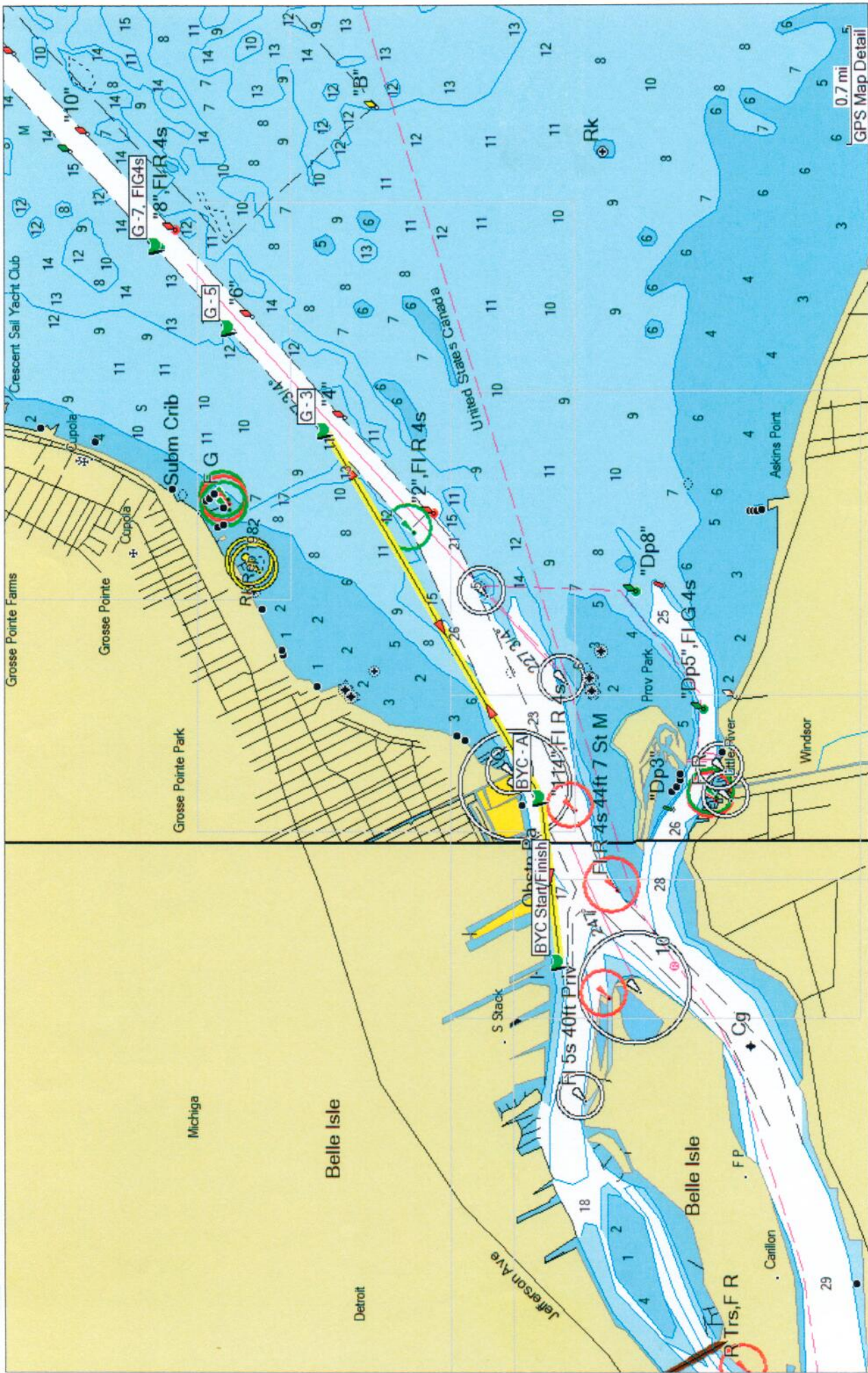
COURSE #1

© Garmin Ltd. or its subsidiaries 1995-2005
 © 2002-2005 Transas Dataco, Ltd.
 This product is produced, in part, from products and with the agreement of Imray Laurie Norrie and Wilson Ltd. UK
 This product has been derived, in part, from Admiralty charts and publications with the permission of the UK Hydrographic Office and the Controller of Her Majesty's Stationery Office. All rights reserved.
 Portions © Wavey Line Ltd. 2005. Wavey Line charts are produced, in part, from products and with the agreement of Wavey Line Ltd.
 Portions © Lewis Offshore Ltd. 2003-2005
 Portions may be © United Kingdom Hydrographic Office
 Data and information contained in this Product are © 2002-2005 Her Majesty the Queen in Right of Canada, Canadian Hydrographic Service / Sa Majesté du chef en Canada, Service hydrographique du Canada and/or Nautical Data International, Inc.,
 license no. 240502001-001/2 and 021704-087



COURSE # 2

© Garmin Ltd. or its subsidiaries 1995-2005
 © 2002-2005 Transas Dataco, Ltd.
 This product is produced, in part, from products and with the agreement of Imray Laurie Norie and Wilson Ltd. UK
 This product has been derived, in part, from Admiralty charts and publications with the permission of the UK Hydrographic Office and the Controller of Her Majesty's Stationary Office. All rights reserved.
 Portions © Wavey Line Ltd. 2005. Wavey Line charts are produced, in part, from products and with the agreement of Wavey Line Ltd.
 Portions © Lewis Offshore Ltd. 2003-2005
 Portions may be © United Kingdom Hydrographic Office.
 Data and information contained in this Product are © 2002-2005 Her Majesty the Queen in Right of Canada, Canadian Hydrographic Service / Sa Majesté du chef en Canada, Service hydrographique du Canada and/or Nautical Data International, Inc.,
 license no. 240502001-001/2 and 021704-087



COURSE #3

© Garmin Ltd. or its subsidiaries 1995-2005
 © 2002-2005 Transas Dataco, Ltd.
 This product is produced, in part, from products and with the agreement of Imray Laurie Norie and Wilson Ltd. UK
 This product has been derived, in part, from Admiralty charts and publications with the permission of the UK Hydrographic Office and the Controller of Her Majesty's Stationery Office. All rights reserved.
 Portions © Wavey Line Ltd. 2005. Wavey Line charts are produced, in part, from products and with the agreement of Wavey Line Ltd.
 Portions © Lewis Offshore Ltd. 2003-2005
 Portions may be © United Kingdom Hydrographic Office.
 Data and information contained in this Product are © 2002-2005 Her Majesty the Queen in Right of Canada, Canadian Hydrographic Service / Sa Majesté du chef en Canada, Service hydrographique du Canada and/or Nautical Data International, Inc., license no. 240502001-001/2 and 021704-087